



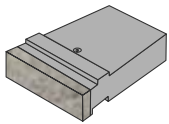
Visit one of our showrooms or learn more at kingsmaterial.com

Cedar Rapids 319.363.0233 Coralville 319.354.1003 Eldridge 563.285.2565 Waukee 515.978.6852

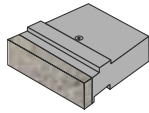
FEATURES

- **Performance:** ReCon's large retaining wall block can be engineered for unreinforced gravity retaining walls reaching heights in excess of 20'.
- **Aesthetics:** ReCon offers some unique textures including; Northshore Granite (stock), Old World, and Rustic (by special order). Block can be field stained.
- **Value:** The ReCon concrete blocks for retaining walls are made from wet cast concrete specifically designed to withstand adverse conditions.

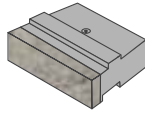
STANDARD UNITS



FM60/FB60



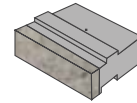
FM45/FB45



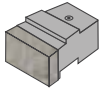
FM39/FB39



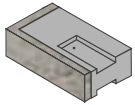
FULL HIGH CAP



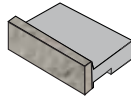
FM24 / FB24



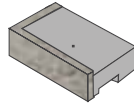
HM24



C



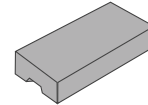
T24



LCT/RCT

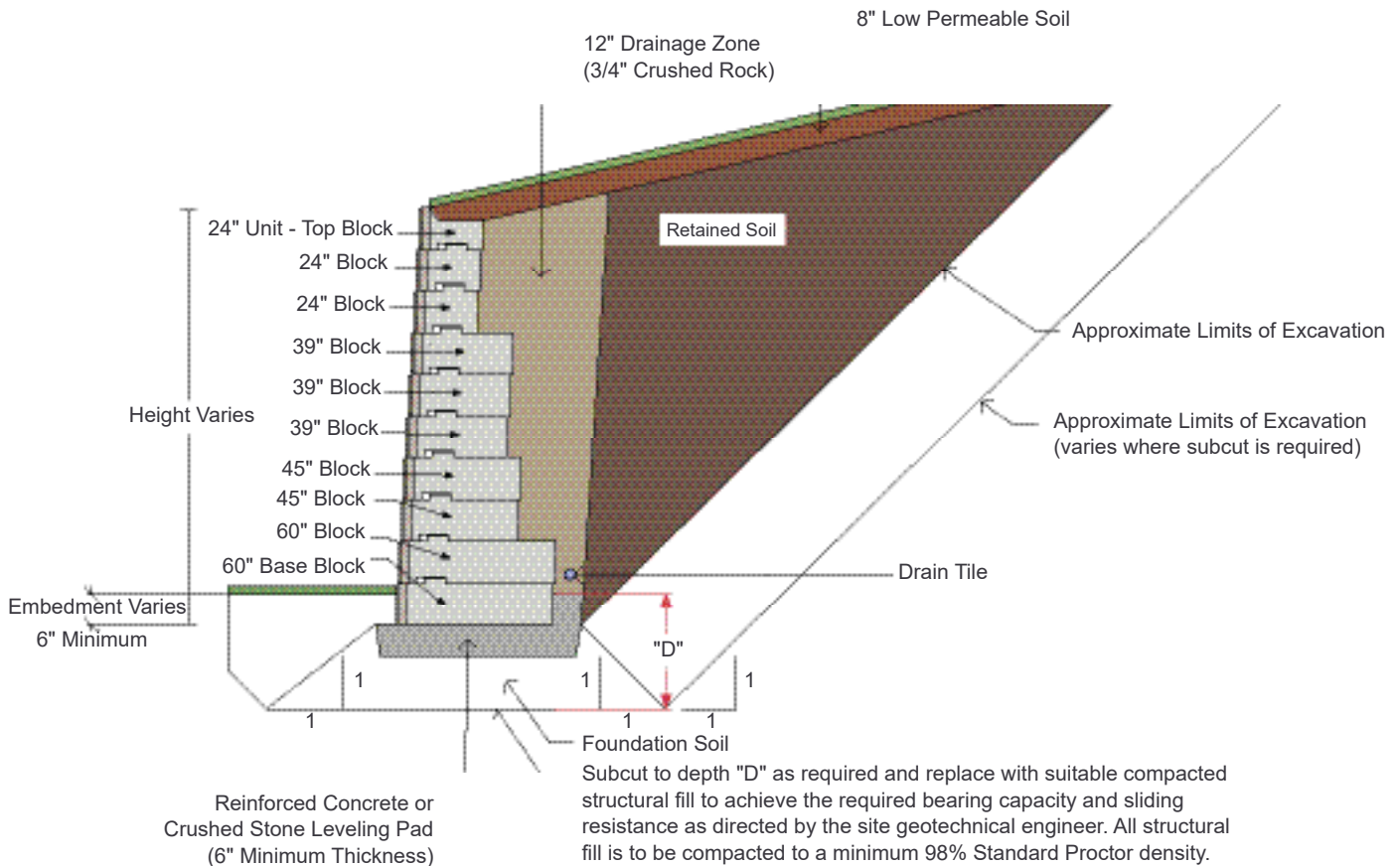


HT24



CAPSTONE

INSTALLATION



Visit one of our showrooms or learn more at kingsmaterial.com

Cedar Rapids 319.363.0233 Coralville 319.354.1003 Eldridge 563.285.2565 Waukee 515.978.6852